

---

# USING ELECTRONIC HEALTH RECORDS AS A REAL WORLD COMPARATOR

*Using Flatiron's electronic health records as a real-world comparator in the setting of single-arm trials*

***Jessica Davies***

***In collaboration with Michael Martinec, Gracy Crane, Mathieu Coudert, Rachel Rosenthal, Dietrich Knoerzer, Thomas Kuenzel, Reynaldo Martina***

*PSI Conference 2018*



# Effectiveness evidence comparing new therapies to SOC SOC is needed at the time of reimbursement

- Accelerated access to novel targeted therapies based on Phase Ib or II data has preceded availability of phase III data for patient populations in the late-stage oncology setting.
- Indirect treatment comparisons (ITC) are commonly used in economic decision making to compare randomized trial data when there is one common treatment arm. However, in a single arm trial setting, an ITC may not be feasible.

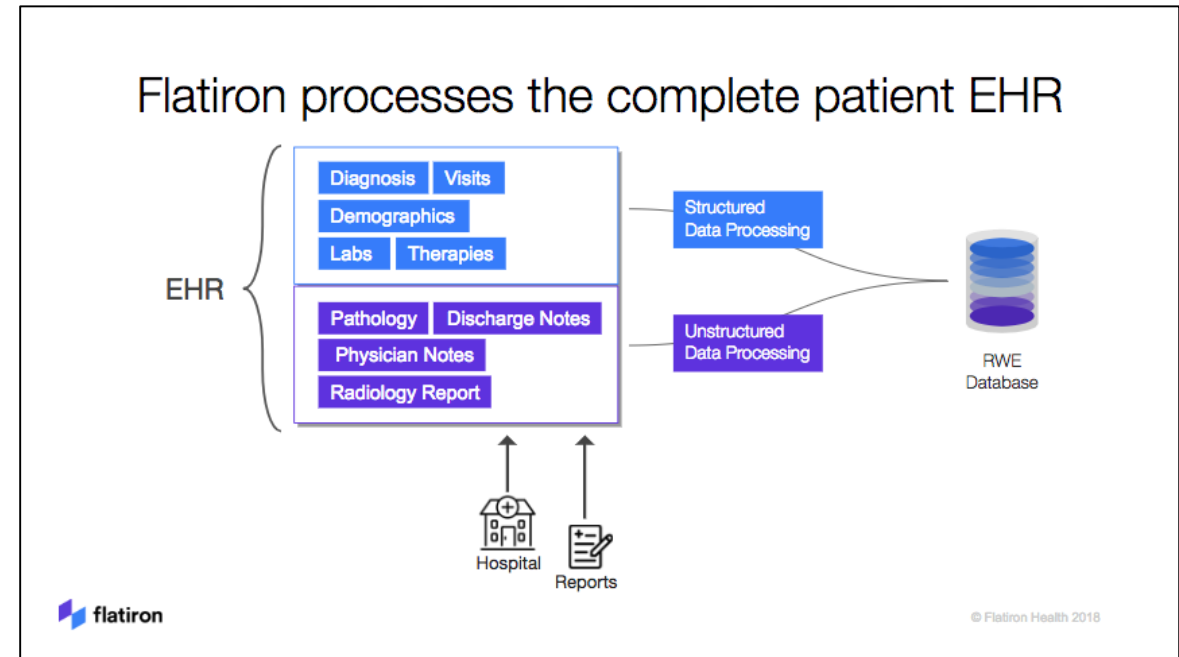
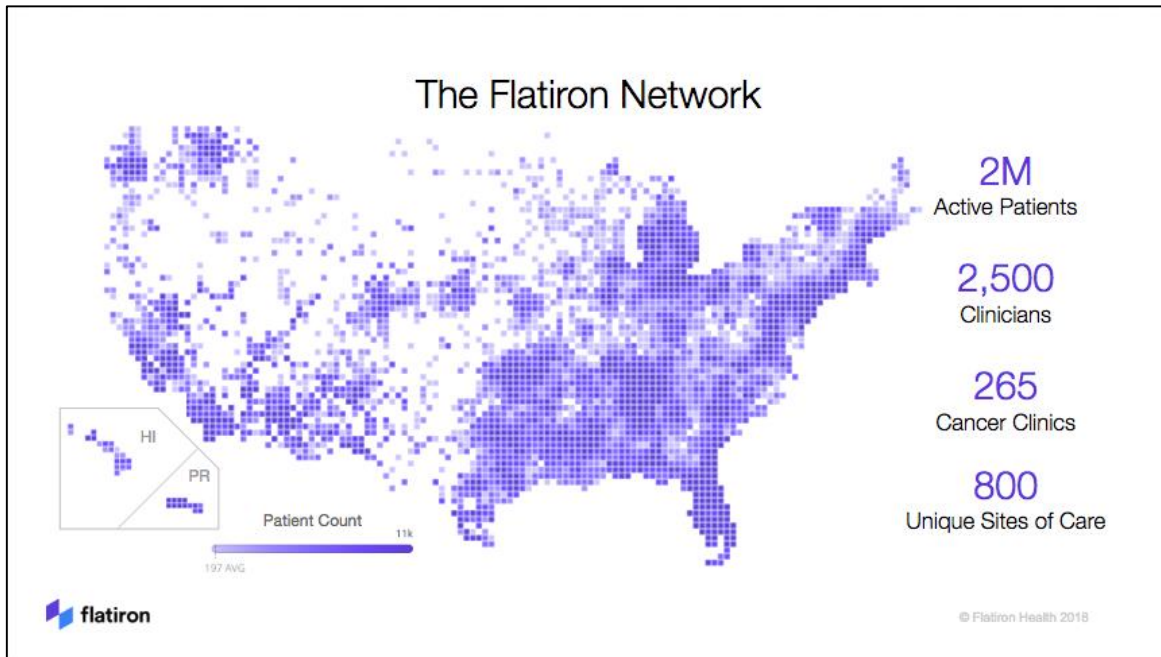


Real world data (RWD) could provide a source to complement trial data in this setting by building a comparison with an external control.

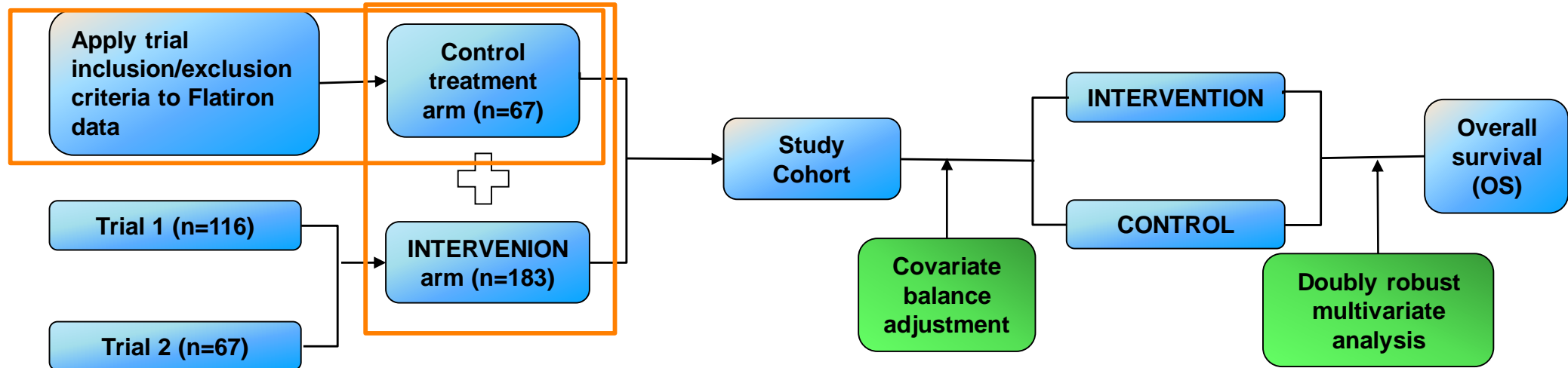


In this illustrative example, we used individual patient level data (IPD) extracted from electronic health records (EHR) to estimate comparative effectiveness of a single-arm trial.

# Flatiron provides patient level data to enable contemporary external controls



# Comparative effectiveness with an external control requires additional analytical steps to address indication bias



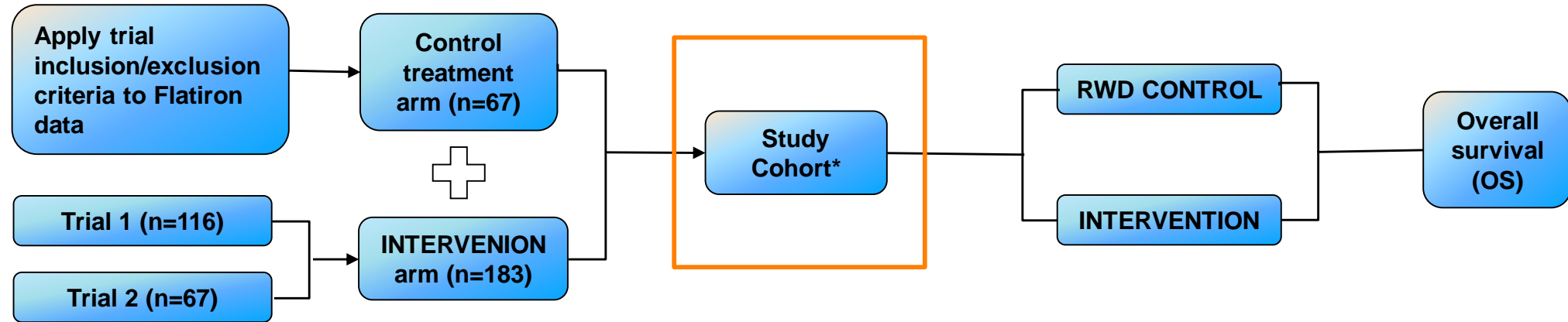
## Study Population:

- Apply trial inclusion and exclusion criteria
- IPD from three different data sources were pooled for a study population

## Statistical Analysis:

- 3 adjusted comparisons were made to enable covariate balance:
  - Inverse propensity treatment weighting (IPTW)
  - Propensity score matching (PSM)
  - Genetic Matching (GenMatch)
- Assess standardized mean differences
- Overall survival was calculated from initiation of treatment to the end of follow-up and/or death
- Multivariate Cox proportional hazards model to compare OS and estimate the average treatment effect
- Comparison with TRIAL CONTROL data & Sensitivity analyses

# Comparative effectiveness with an external control requires additional analytical steps to address indication bias



## Study Population:

- Apply trial inclusion and exclusion criteria
- IPD from three different data sources were pooled for a study population

## Statistical Analysis:

- 3 adjusted comparisons were made to enable covariate balance:
  - Inverse propensity treatment weighting (IPTW)
  - Propensity score matching (PSM)
  - Genetic Matching (GenMatch)
- Assess standardized mean differences
- Overall survival was calculated from initiation of treatment to the end of follow-up and/or death
- Multivariate Cox proportional hazards model to compare OS and estimate the average treatment effect
- Comparison with TRIAL CONTROL data & Sensitivity analyses

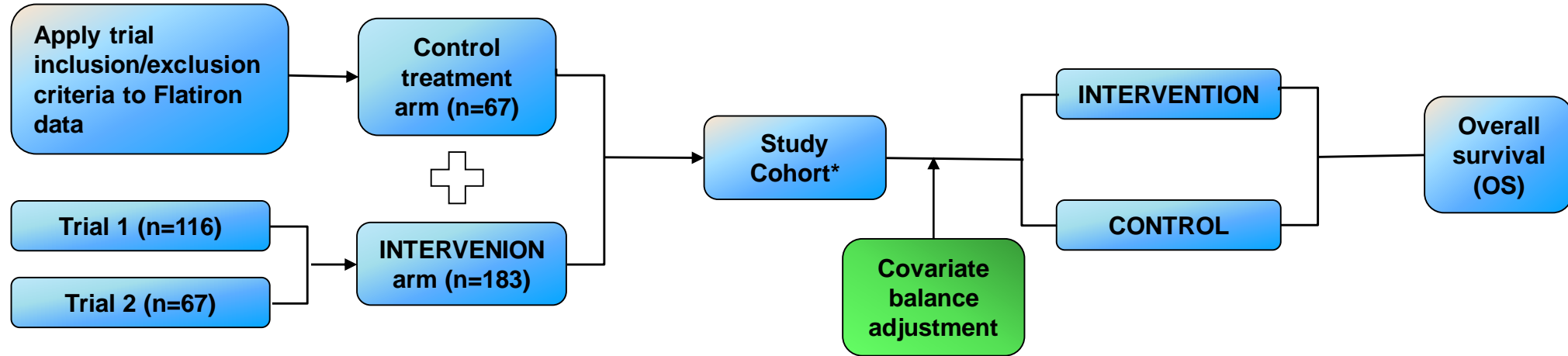
# Characteristics were imbalanced prior to covariate balance

**Table 1. Patient demographics and clinical characteristics prior to covariate balance**

Characteristics	INTERVENTION (n=183)	RWD CONTROL (n=67)
Median age, years (IQR)	55 (44–61)	61 (53–67)
<65 years, n (%)	160 (87)	41 (61)
Female, n (%)	98 (54)	37 (55)
White, n (%)	133 (73)	49 (73)
ACA histology, n (%)	175 (96)	61 (91)
Stage IV, n (%)	170 (93)	59 (88)
No smoking history, n (%)	121 (66)	37 (55)
CNS metastasis, n (%)	111 (61)	23 (34)
Prior line of treatment, n (%)		
1	52 (28)	38 (57)
2	66 (36)	20 (30)
≥3	65 (36)	9 (13)

ACA, adenocarcinoma; CNS, central nervous system; IQR, interquartile range

# Comparative effectiveness with an external control requires additional analytical steps to address indication bias



## Study Population:

- Apply trial inclusion and exclusion criteria
- IPD from three different data sources were pooled for a study population

## Statistical Analysis:

- 3 adjusted comparisons were made to enable covariate balance:
  - Inverse propensity treatment weighting (IPTW)
  - Propensity score matching (PSM)
  - Genetic Matching (GenMatch)
- Assess standardized mean differences
- Overall survival was calculated from initiation of treatment to the end of follow-up and/or death
- Multivariate Cox proportional hazards model to compare OS and estimate the average treatment effect
- Comparison with CONTROL TRIAL data & Sensitivity analyses

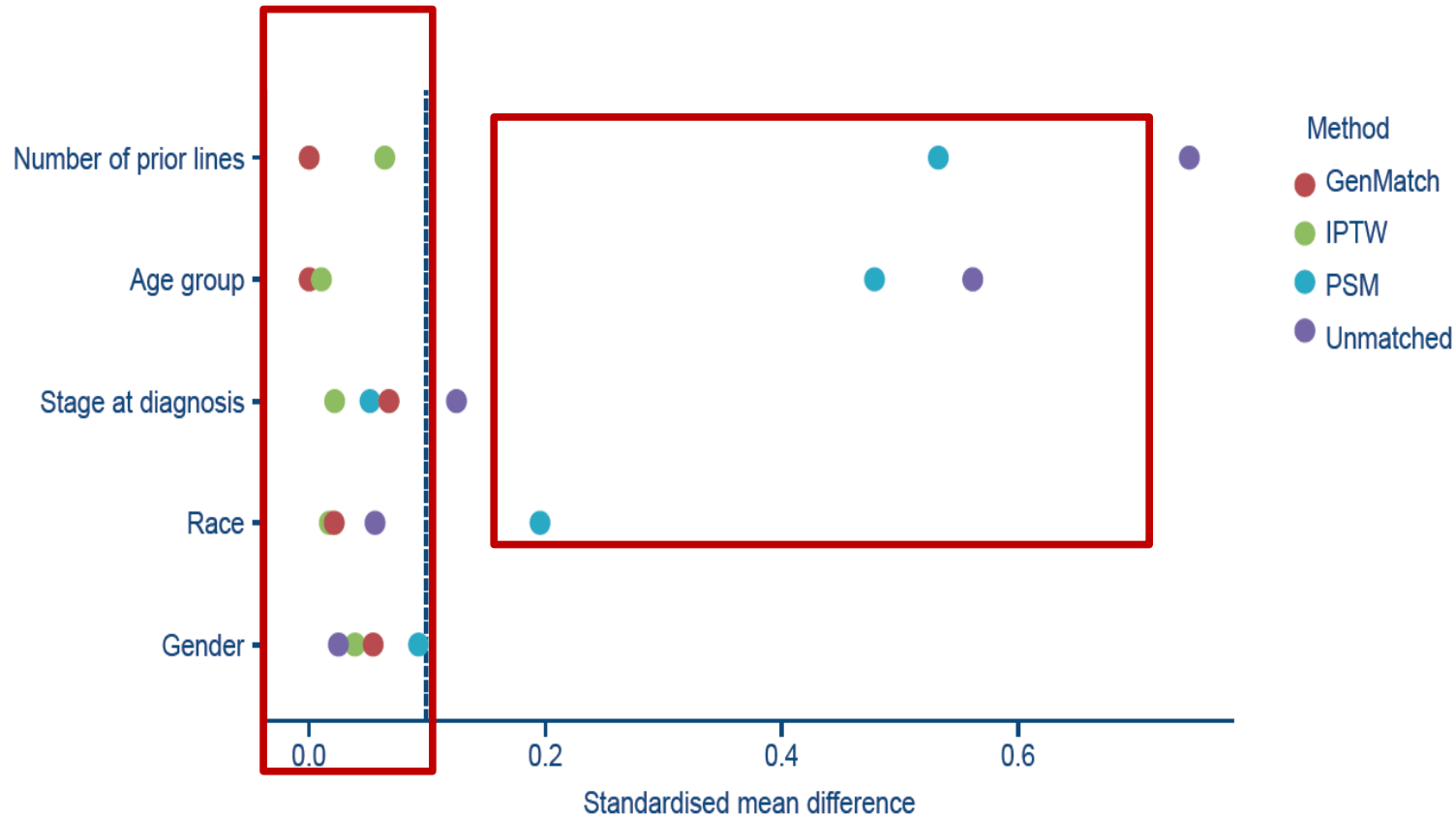
# INTERVENTION and CONTROL more closely overlapped after covariate balance adjustments with IPTW and GenMatch

Table 2. Distribution and absolute difference after balance adjustments

Characteristic	Unadjusted			IPTW			PSM			GenMatch		
	I	C	Diff	I	C	Diff	I	C	Diff	I	C	Diff
Age <65	87	61	-26	79.9	79.5	0.4	87.4	68.1	-19.3	89.8	89.8	0.0
Female	54	55	-1	54.4	53.1	1.3	53.6	48.9	4.7	45.9	45.9	-2.7
White	73	73	0	72.5	72.4	0.1	72.7	80.9	-8.2	84.7	84.7	0.7
Stage IV	93	88	5.0	91.8	92.4	-0.6	92.9	91.5	1.4	96.3	96.3	1.4
Prior line of treatment												
1	28	57	-29	36.2	37.5	-1.3	28.4	51.1	-22.7	52.6	52.6	0.0
2	36	30	6	34.4	36.0	-1.6	36.1	31.9	4.2	34.6	34.6	0.0
>3	36	13	23	29.4	26.6	2.8	35.5	17.0	18.5	12.7	12.7	0.0

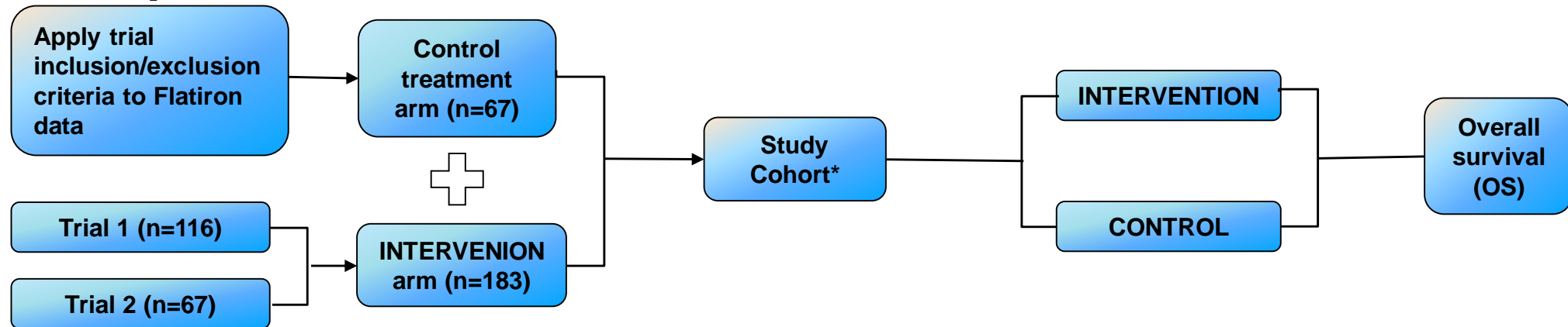


# After balance adjustment IPTW & GenMatch achieved covariate balance



- After balancing adjustments:
  - IPTW and GenMatch improved balance (SMD < 10%)
  - PSM did not balance measured confounders (SMD  $\geq$  25%)

# Comparative effectiveness with an external control requires additional analytical steps to address indication bias



## Study Population:

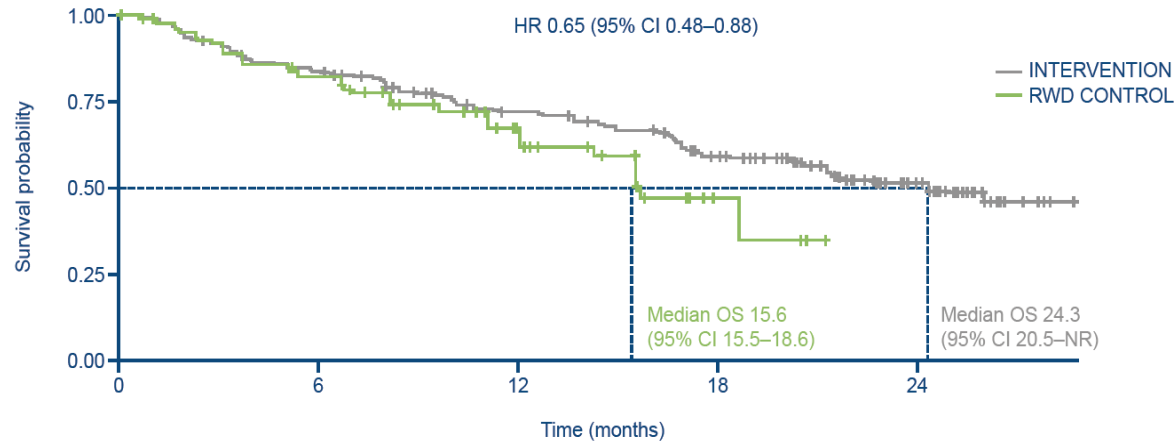
- Apply trial inclusion and exclusion criteria
- IPD from three different data sources were pooled for a study population

## Statistical Analysis:

- 3 adjusted comparisons were made to enable covariate balance:
  - Inverse propensity treatment weighting (IPTW)
  - Propensity score matching (PSM)
  - Genetic Matching (GenMatch)
- Assess standardized mean differences
- Overall survival was calculated from initiation of treatment to the end of follow-up and/or death
- Multivariate Cox proportional hazards model to compare OS and estimate the average treatment effect
- Comparison with TRIAL CONTROL data & Sensitivity analyses

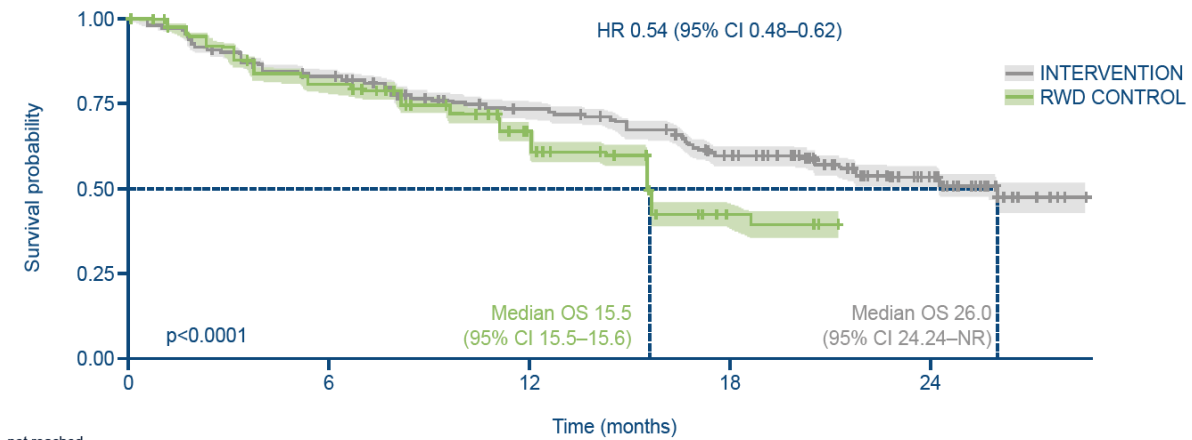
# Survival by IPTW and GenMatch analysis

Figure 2. Survival by IPTW analysis



NR, not reached

Figure 3. Survival by GenMatch analysis



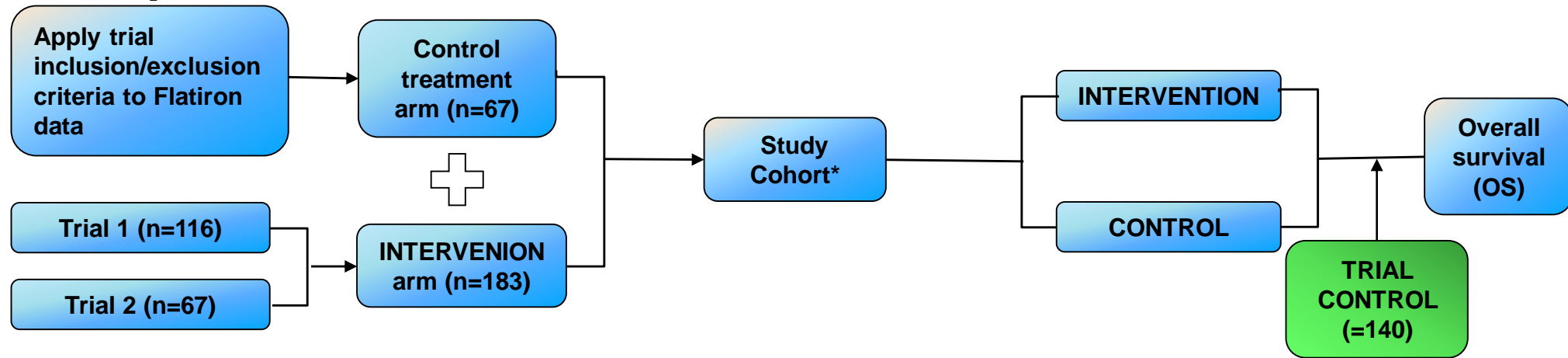
NR, not reached

The observed treatment effect on the risk of death:

- IPTW cohort (I=251, C=236; HR 0.64; 95% CI 0.48–0.88)
- GenMatch (I=1,241, C=1,241; HR 0.54; 95% CI 0.48–0.62)

Note: Population sizes are larger due to weighting. Stabilized weights were used in order to have an average weight close to 1 (and pseudo sample size close to original sample size)

# Comparative effectiveness with an external control requires additional analytical steps to address indication bias



## Study Population:

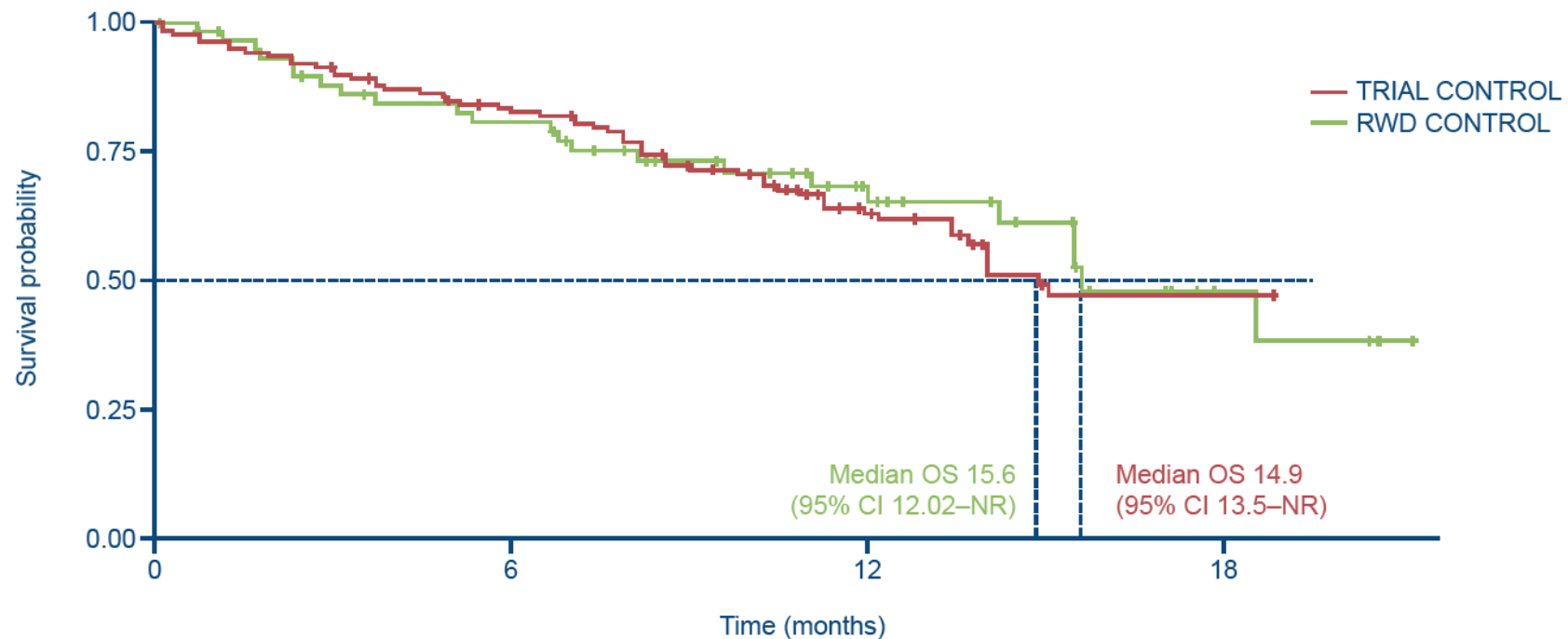
- Apply trial inclusion and exclusion criteria
- IPD from three different data sources were pooled for a study population

## Statistical Analysis:

- 3 adjusted comparisons were made to enable covariate balance:
  - Inverse propensity treatment weighting (IPTW)
  - Propensity score matching (PSM)
  - Genetic Matching (GenMatch)
- Assess standardized mean differences
- Overall survival was calculated from initiation of treatment to the end of follow-up and/or death
- Multivariate Cox proportional hazards model to compare OS and estimate the average treatment effect
- Comparison with TRIAL CONTROL data & Sensitivity analyses

**Median OS was similar between the unadjusted RWD CONTROL cohort (15.6 months) and TRIAL CONTROL cohort (14.9 months)**

Figure 4. Survival of RWD CONTROL and re-digitised TRIAL CONTROL



NR, not reached

# Case Study Learnings

- Our results demonstrate the utility of EHR data to estimate comparative effectiveness for a single-arm trial, and as a tool to provide comparative data when randomised controlled trials are not available due to swiftly changing standards of care.
- Additional measures to reduce bias from known confounding factors should be taken when comparing data from different sources.
- The PSM analysis result did not adequately balance the two treatment cohorts. However, the other methodologies allowed us to achieve balance and therefore produce an unbiased comparison between the INTERVENTION cohort and RWD CONTROL cohort. The similarity between the TRIAL CONTROL cohort and RWD CONTROL cohort adds credibility to the results observed with the RWD TRIAL cohort comparison.

# Back-up

