



PSI 2024  
CONFERENCE



AMSTERDAM



BEURS VAN BERLAGE  
16-19 JUNE 2024



Dear Emily,

Join us at the PSI Conference 2024 in Amsterdam, Netherlands from Sunday 16th to Wednesday 19th June 2024.

**Registration for the conference is now open.** Click below to see more details and register now to qualify for the Early Bird discount - do take note: The Early Bird discount ends March 31st!

Group registration discounts are also available if your company is sending multiple attendees.

[Register Now!](#)

## SPOTLIGHT ON: Pre-Conference Courses

This year we are delighted to offer two pre-conference courses, set to run on Sunday 16 June 2024 13:00 - 17:00. They will be held at the same location used for the conference itself – at the Beurs Van Berlage. The courses are Bayesian Methods for borrowing information (with applications in clinical trials) and Applying causal inference for effective implementation of the estimand framework in drug development. There is a generic overview of each Course below, but [for full details, please visit our website](#).

### Pre-conference course 1: **Bayesian methods for borrowing of information (with applications in clinical trials)**

Using external-trial information such as historical control data in the design and analysis of clinical trials has gained considerable interest in recent years. It is especially desirable in early phase drug development or situations of small population clinical trials, e.g., rare-disease clinical trials, where classical approaches can fall short. Use of data from historical studies conducted under the same or similar conditions could mean less information is required in a new study while preserving study power. This course is designed to introduce both fundamental concepts and advanced features of Bayesian methods that permit borrowing of information. Case studies will be presented to illustrate key points to consider in the planning stage, as well as effective communication of advanced designs to non-statistician professionals.

### Pre-conference course 2: **Applying causal inference for effective implementation of the estimand framework in drug development.**

There is increasing interest in estimands and causal inference in RCTs. This is reflected in the ICH E9 (R1) addendum on estimands (2019) which clarifies that effects other than the traditional intention-to-treat may be of interest; considers post-randomization confounding and selection bias due to intercurrent events; and discusses principal stratum and hypothetical strategies. Estimation aligned with these strategies often requires causal inference methodology. It is also reflected in the FDA guidance on covariate adjustment (2023) where the difference between conditional vs. marginal effects is discussed and G-computation (standardization) is mentioned as one possible estimation approach. Application of causal inference can help provide impactful insights into trial data.

Wondering what there is to learn from our Pre-Conference Courses? Well be sure to take a look at the full overview via the button below!

Registration for both courses is available through the conference registration site. Places are limited so book early to avoid disappointment, and take advantage of the early bird discount!

[Pre-Conference Courses](#)

## FINAL CALL: Deadline for Poster Abstracts fast approaching!

Thank you to everyone who took the time to submit an abstract for oral presentation this year. We received a record number of abstract submissions (over 180) and the quality was excellent.

You still have some time to submit an abstract for the popular “gone in 60 seconds” (where you have 60 seconds to promote your poster) and poster session. The **final deadline is THIS SUNDAY, the 25th February 2024.**

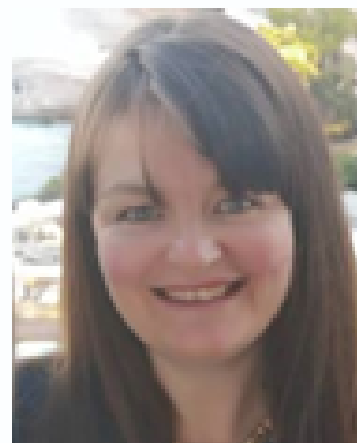
You can find the full list of abstract topics and download the abstract templates below.

[Abstract Submission](#)

### A Message from the Conference Chair

I've just returned from a site visit to Amsterdam and registrations have started coming in, so my excitement levels for this years' conference are increasing! The Early bird deadline for registration and pre conference courses is 31st March 2024. I hope to see you there!

**Sarah Williams**  
**Conference Chair**



[Let your colleagues know...](#)

[Enquiries...](#)

Please share this email with any colleagues and friends who you think will be interested in the PSI Annual Conference.

Should you require any assistance, please do not hesitate to contact the conference secretariat.

E: [PSI2024@wearemci.com](mailto:PSI2024@wearemci.com)

T: + 44 (0) 1730 715 235

W: [www.psiweb.org](http://www.psiweb.org)

Share:



Powered by Glue Up

All-in-one CRM Software for Growing Communities