

Welcome! (and Agenda)

13:00 – 14:40	Talks <ul style="list-style-type: none"> - Welcome and Introduction from PSI Careers - Universities - New Starter presentation - Medical statistics panel discussion with some of our company volunteers
14:40 – 16:30	Exhibition session <ul style="list-style-type: none"> - Meet company and university representatives and visit exhibition stands

We hope you have also been able to take a look at some of our pre-recorded presentations:

- Overview of pharmaceutical industry video
- The role of a medical statistician
- Three New Starter presentations (CRO, CTU and Pharma)
- Next steps: Advice on job search, applications and interviews

These are available on our website (<https://psiweb.org/careers/psi-careers-event/students/student-videos>)

About PSI

Global member organisation dedicated to leading and promoting best practice and industry initiatives for statistics

Founded in 1977

>1000 Members mainly from Europe

Membership includes: statisticians, statistical programmers, academics, consultants and data scientists

Across pharmaceuticals, healthcare and medical research

More about PSI

“We are a community dedicated to leading and promoting the use of statistics within the healthcare industry for the benefit of patients.”

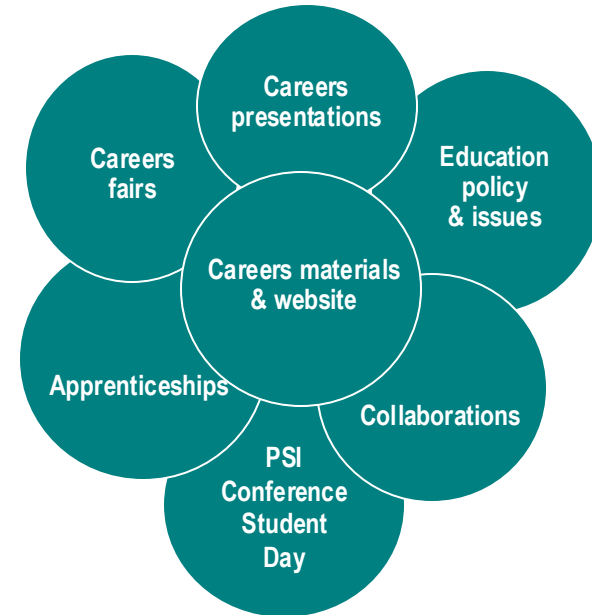
- Careers
- Training
- Annual conference
- Scientific meetings
- Publications
- Regulatory
- Expert groups
- Collaborations



PSI isn't just here to aid you in getting a job; it's here to support you throughout your career

PSI Careers Universities committee

- We focus on providing careers support and information to university students
- This involves:
 - Podcasts
 - Placement opportunities
 - Undergraduate Prizes
 - MEDMathS
 - Medical Statistics Careers event
 - Student Newsletter
 - Apprenticeships
- There are also other general careers activities that we are all involved with.
- Part of a larger PSI Careers group with teams focused on Schools, Website, Introduction to Industry Training, Career Young, Professional Development



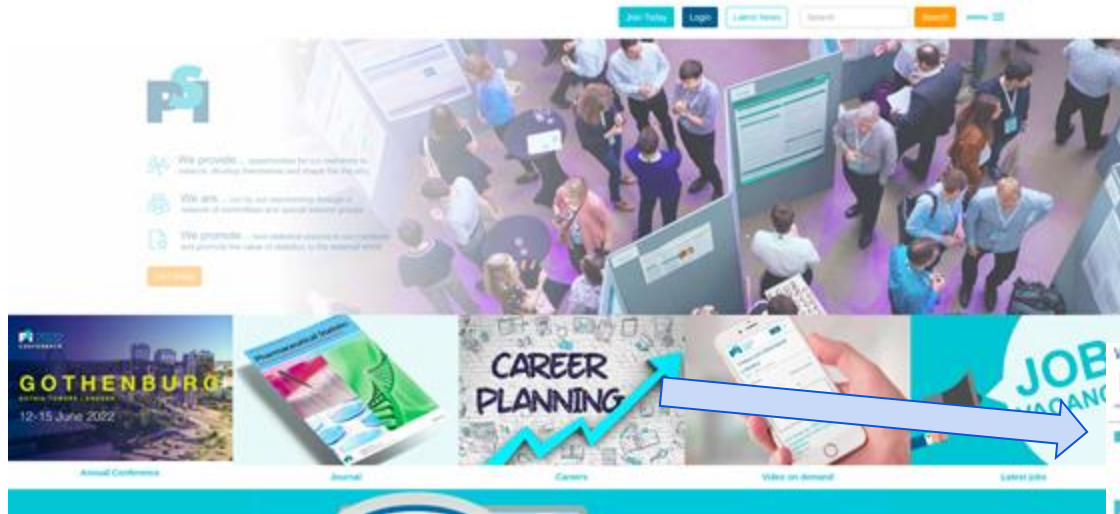
Thank you, PSI Careers - Universities!

Name	Company, country	Role
Lizzi Pitt*	GlaxoSmithKline, UK	Chair
Rachel Phillip*	CTRU, University of Leeds, UK	Events
Alexander Todd*	AstraZeneca, UK	Events
Amy Ashworth*	Pfizer, UK	Events
Sophie Edmonds*	Amgen, UK	Events
Deanna Galloway	Roche, UK	Outreach
Stella Zhan	Centre for Quantitative Medicine, Duke-NUS Medical School, Singapore	Outreach
Katie Dixon	Phastar, UK	Outreach
Diana Voiniciuc	Anthony Nolan, UK	Outreach
Valerie Millar	MoonLake, UK	Apprenticeships
Jasmine Paul	Parexel, UK	Apprenticeships
Anna Kirkley	Veramed, UK	Apprenticeships
Isabelle Santhiapillai	GlaxoSmithKline, UK	Apprenticeships

* PSI Careers Event organising committee

"We are a community dedicated to leading and promoting the use of statistics within the healthcare industry for the benefit of patients."

www.psiweb.org/careers

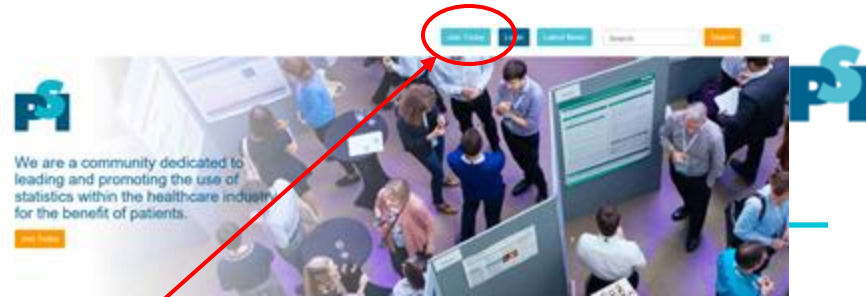


- For more information on what we do visit our website.
- Within the PSI Careers website, there is a specific University Zone aimed at students.
- In addition, there is a Schools Zone and an Industry Zone for those already working as statisticians.

- Other useful careers information available at:
- <https://careers.abpi.org.uk/careers/>
- <https://rss.org.uk/jobs-careers/career-development/>



Student membership



- **Free** to all students & teachers! Registration to this event gives you membership until the end of 2026 and will be applied soon!
- Valid from January – December 2026 (renewal every January)

What you get:

- Access to Video-on-Demand content
- Reduced fees at training courses and annual conference
- Access to the members-only area of the web site
- *And much more!*

Benefits:

- Looks good on your CV
- Start building your professional network
- Access to job ads
- Keep up to date with relevant news in the industry!
- *And much more!*

PSI Conference



- The PSI Conference 2026 will be in-person at ICC, Belfast between **15 - 17 June 2026**
- This is regarded as the principal annual event for statisticians in the pharmaceutical industry
- The conference will include plenary sessions, parallel sessions and a poster display. Material will be also be available on demand plus there will be an exhibitor area.
- A Student Day Pass** is available on Monday 15th June for £40, including a Career Young Statistician session and other student sessions (**you will need to register as a PSI student member first)
- If you can't make it to the conference, then do still consider becoming a PSI student member as many of the sessions will be recorded and available online after the conference.
- PSI usually alternates its conference between a UK city and mainland Europe each year - so keep an eye out in future years if the conference is near you.
- Find out more at:

<https://psiweb.org/conferences>



Career Young Statisticians

WHAT WE DO



Virtual Networking Events

Opportunity to meet statisticians from across the industry in a relaxed, informal setting - (quarterly)



Face-to-Face Networking Event

Including activities such as interactive workshops, careers panel Q&A, mini debates, and more! - (annual)



PSI Conference Support

Two sessions on the conference's first day for questions and networking

WANT TO GET IN CONTACT?

Reach out to our co-chairs



Charlotte, AstraZeneca
Statistician

charlotte.chrispin@astrazeneca.com



Oswald, ICTU
NIHR Pre-doctoral Fellow

o.dallimore@imperial.ac.uk

Suitable for those in first 5 years of their career in the pharmaceutical industry

"We are a community dedicated to leading and promoting the use of statistics within the healthcare industry for the benefit of patients."

Medical Statistics Apprenticeship

- The Medical Statistics Level-7 Apprenticeship has been running for the past few years
- Study for an MSc part-time over 2-3 years, alongside gaining on-the-job experience by working (and earning a salary) at a company. No cost to the student for the MSc.
- The government have pulled funding for level-7 apprenticeships for over 21s which has put the apprenticeship at risk. PSI are working hard to push back – look out for a petition to sign!
- Some companies are still offering the apprenticeship. Keep a look out for companies that may be advertising apprentice positions (as you would apply to the company rather than the university) – try the PSI website [Jobs Board](#) or [Medical Stats Apprenticeship page](#).

Useful links:

PSI Careers website:

<https://www.psiweb.org/careers/educationandresources/medical-statistician-apprenticeship>

Also:

<https://www.instituteforapprenticeships.org/apprenticeship-standards/medical-statistician>



MSc funding

- **We are delighted to announce that PSI will be sponsoring two MSc students for the 2026/27 academic year!**
- Sponsorship will contribute up to £12858 towards tuition fees for a Master's degree related to Medical Statistics (available to UK home fee status students who are not receiving other financial support).
- **Application will consist of CV and cover letter including**
 - The course you intend to pursue including the university, whether you intend to undertake the course full or part time and your status of acceptance to the course.
 - Your motivation for pursuing an MSc related to medical statistics.
 - Any prior experience you have in medical statistics.
 - An outline of your career aspirations and what you hope to achieve after completing the MSc.
- **Applications will close on 2nd March.**
- **Keep an eye on the PSI website and PSI emails for details on how to apply.**

Exhibitors today

Pharmaceutical Companies

- AstraZeneca
- GSK
- Pfizer
- Roche

Contract Research Organizations (CROs)

- Medpace
- Numerus
- Phastar
- Plus-Project Ltd
- Veramed

Professional Societies

- UKCRC, Registered CTU Network

Clinical Trials Units (CTUs)

- Cancer Research Clinical Trials Unit, University of Birmingham
- Clinical Trials Research Unit, University of Leeds
- Imperial Clinical Trials Unit, Imperial College London
- NHS Blood and Transplant Clinical Trials Unit

Universities

- Bristol
- Lancaster
- Leicester
- London School of Hygiene and Tropical Medicine

Feedback



- Your feedback is really important to help us plan future events
- Please complete the online feedback form that we will email to you
 - Or feel free to email us at careers@psiweb.org if you have specific feedback
- If you opted in when you registered, we will be providing email addresses to exhibitors.
- We are looking for a few students to be featured in PSI newsletters – let us know if you would be happy to provide a review

Thank You!



New Starter in Medical Statistics at a CRO



Jamarl Webley
Statistician II
Veramed

PSI Medical Statistics Careers Event 2025

"We are a community dedicated to leading and promoting the use of statistics within the healthcare industry for the benefit of patients."

New Starter in Medical Statistics at a Contract Research Organisation (CRO)

Jamarl Webley
Statistician II – Veramed

PSI Medical Statistics Careers Event 2025



Veramed

Agenda

- 01 About me**
My path to becoming a medical statistician
- 02 A day in the life of a medical statistician**
- 03 What statistics have I used?**
- 04 The good and the challenges**
 - What's good about my job?
 - What's challenging?

05 First year expectations

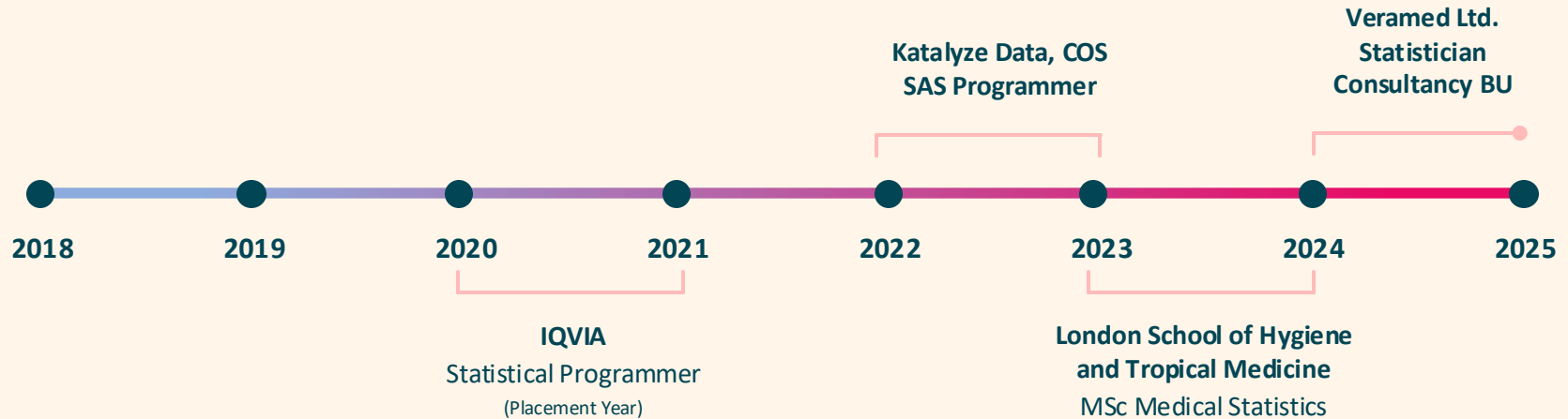
06 Why work as a medical statistician at a CRO?



About me



University of Reading
BSc Mathematics and Economics



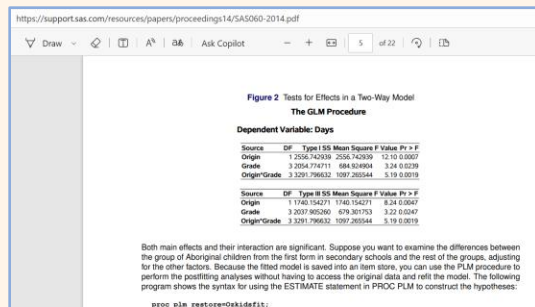
"We are a community dedicated to leading and promoting the use of statistics within the healthcare industry for the benefit of patients"

A day in the life

- Contribute to drug development process
- Tables, Figures and Listings programming
- Reading Protocol, Statistical Analysis Plan (SAP), Shells
- SAS Documentation, other papers, general statistical research

```
if prestat="SD" then stat=strip(prestat);
else if prestat="M" then stat="n";
else stat=propcase(prestat);
/*adding stats orderings*/
select (prestat);
  when ("N")   ord=1;
  when ("MEAN") ord=2;
  when ("SD")  ord=3;
  when ("MEDIAN") ord=4;
  when ("MINIMUM") ord=5;
  when ("MAXIMUM") ord=6;
  otherwise ord=.;
end;

if prestat="N" and stptn=1 then call missing(trt1chg, trt1pchgr, trt2chg);
/* 0 and 100 formatting (if needed) */
array zeros{*} trt1;
do i=1 to dim(zeros);
  if round(input(zeros[i],best.),1.) =0 then zeros[i]=" 0";
  else if round(input(zeros[i],best.),1.) =100 then zeros[i]=" 100";
  else if round(input(zeros[i],best.),1.) =-100 then zeros[i]="-100";
end;
```



ervers

Start Page | ADLB | Query Builder x

Run | Modify Task | Share | Properties

Code | Log | Output Data (1)

Where | Query Builder | Tasks

	TRTAN	AVISIT	AVISITN	PARAM	AVAIL	LBNRIND
1	2	Screening	-1	Albumin (g/L)	44	Normal
2	2	Baseline	0	Albumin (g/L)	43	Normal
3	2	Day 8	3	Albumin (g/L)	40	Normal
4	2	Day 28	4	Albumin (g/L)	40	Normal
5	2	Day 57	5	Albumin (g/L)	45	Normal
6	2	Day 85	6	Albumin (g/L)	37	Normal
7	2	Day 113	7	Albumin (g/L)	39	Normal
8	2	Baseline	0	Albumin/Globulin Ratio	1.128	Normal
9	2	Day 8	3	Albumin/Globulin Ratio	1.053	Normal
10	2	Day 28	4	Albumin/Globulin Ratio	1.081	Normal

Libraries

- ADAM
- ADAE
- ADAP
- ADCM
- ADOV
- ADEC
- ADIE
- ADIS
- ADLB
- ADMH



A day in the life

- Data Simulation
- Training: Regulatory, Statistical, Programming
- General Admin

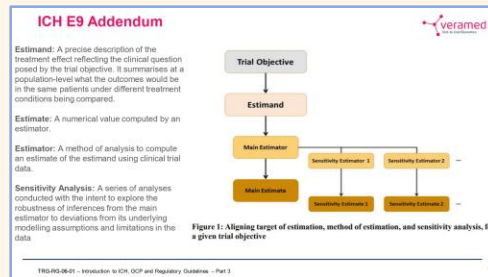
```
# this dispatcher function resolves the three treatment specific functions
# based on treatment group.
simulate.dt <- function(row) {
  if (row[2] == "PLACEBO") {return(sim.placebo(row))}
  else if (row[2] == "TRT-001 100mg") {return(sim.100mg(row))}
  else if (row[2] == "TRT-001 200mg") {return(sim.200mg(row))}
  else {return(NA)}
}

# generate a dummy dataset, to use these functions to generate 9,999 records
dummy <- tibble(
  trt01a = rep(1:3,3333),
  trt01a = rep(c("PLACEBO", "TRT-001 100mg", "TRT-001 200mg"),3333)
)

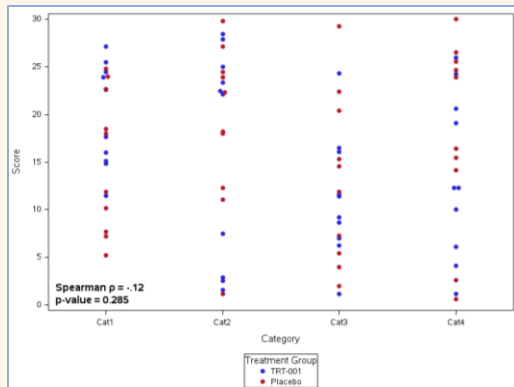
# apply the FEV1pp simulation function to all the rows in the dummy dataset,
# then transpose to get data in required intermediate structure
dtsim <- dummy %>% apply(1, simulate.data) %>% t()

# create responder variable
dtbreaks <- c(0,50,65,80, Inf)
dtcats <- c(1:4)

responders <- as.data.frame(dtsim) %>% mutate(
  catbl = cut(V1, breaks = dtbreaks, labels = dtcats),
  catdl5 = cut(V1, breaks = dtbreaks, labels = dtcats),
  respondern = ifelse(as.integer(catdl5) - as.integer(catbl) >= 1, 1, 0)
) %>% cbind(dummy[c("trt01a", "trt01a")])
```



What statistics have I used?



Statistical Analysis of Q1: Pain Responders (GEE Analysis)

a Visit	Treatment Group	Estimated Percentage of Responders (%)	95% CI for Percentage of Responders (%)	Odds Ratio TRT-001: Placebo	95% CI for Odds Ratio
Day 1	TRT-001 (N=40)	18.45	(1.857, 55.546)	0.11	(0.013, 1.518)
	Placebo (N=34)	67.24	(47.255, 89.348)		
Day 40	TRT-001 (N=40)	23.87	(11.938, 38.886)	0.56	(0.077, 4.458)
	Placebo (N=34)	35.86	(17.515, 58.930)		
Day 80	TRT-001 (N=40)	58.34	(34.837, 79.547)	1.81	(0.789, 9.651)
	Placebo (N=34)	43.60	(20.156, 68.263)		

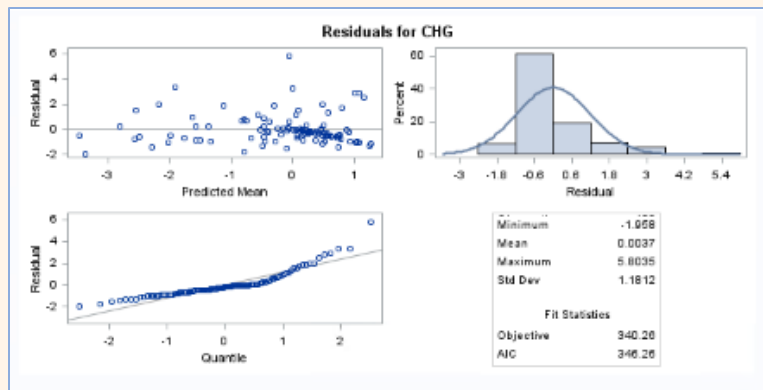
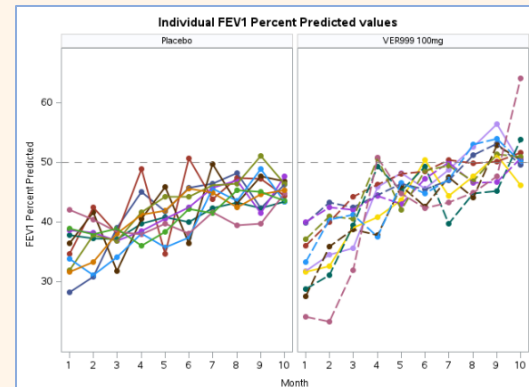


Table 1.2
Bayesian Mixed Model for Repeated Measures (MMRM) Analysis of

Visit		Placebo (N=XX)
Baseline	n	xx
	Mean	xx.x
Visit 2, Day 3	n	xx
	Posterior Median of LS Mean	xx.x
	95% HPD	(xx.x, xx.x)
	Posterior Median of LS Mean difference	
	95% HPD (VER101999 -Placebo)	
	Probability of the Difference greater than:	
	0%	
	10%	

The good and the challenges



The good

- Work variety
- Research opportunity
- Direct application of Master's degree

The challenges

- Quickly changing deadlines
- Steep learning curve if not familiar with industry:
 - Regulatory Guidelines
 - Data Structures
 - Terminology



What is expected from me in my first year?

- Familiarisation
- SAS/R
- Drug Development Process
- ICH, Estimands, Good Clinical Practice
- Study Documentation

**Learn as much
as you can!**



Should you work as a Medical Statistician at a CRO?

- Meaningful impact
- Making a difference in patients' lives
- Ethically rewarding

- Intellectual stimulation
- Unpredictable clinical data
- Continuous learning of new statistical/programming methods
- Use of increasingly complex methodologies

- Career Progression
- **High in Demand!**





Any Questions?



"We are a community dedicated to leading and promoting the use of statistics within the healthcare industry for the benefit of patients"



Thank you



“We are a community dedicated to leading and promoting the use of statistics within the healthcare industry for the benefit of patients”



PSI Medical Statistics Careers Event Panel Discussion



PSI Careers - Universities



Rachel Phillip
Wednesday 19th November 2025



Please submit your questions by going to the Vevox app on your phone using this QR code:



We will pick some to answer towards the end of today's session



UNIVERSITY OF
BIRMINGHAM

Introduce yourself

Name, Current Company & Position,
Summary of your career path to date



UNIVERSITY OF
BIRMINGHAM

What do you enjoy the most about your role?



M E D P A C E



UNIVERSITY OF
BIRMINGHAM

What is the most challenging aspect of your role?



M E D P A C E



UNIVERSITY OF
BIRMINGHAM

What is the most unusual/ interesting project you've been involved in?



M E D P A C E



UNIVERSITY OF
BIRMINGHAM

What motivates you for the work you do?



M E D P A C E



UNIVERSITY OF
BIRMINGHAM

What has been your most nerve-wracking experience so far?



UNIVERSITY OF
BIRMINGHAM

What has been your proudest achievement so far?



M E D P A C E



UNIVERSITY OF
BIRMINGHAM

As a student, what would you have liked to know then, that you know now?



UNIVERSITY OF
BIRMINGHAM

For new starters at your company, how much time do they need to be in the office and why?



UNIVERSITY OF
BIRMINGHAM

What do you look for in candidates during a job interview? Do you have a typical question you would ask?



UNIVERSITY OF
BIRMINGHAM



Exhibition Session

If you don't want to be featured in any photographs, please let a PSI volunteer know.

Session open until 16:30





Back-up Questions

Have you had to travel anywhere
interesting for work?



M E D P A C E



UNIVERSITY OF
BIRMINGHAM

What are you hoping to achieve in your career in the future?



M E D P A C E



UNIVERSITY OF
BIRMINGHAM